

# MY LAB

## THE NEW COLOR SENSATION

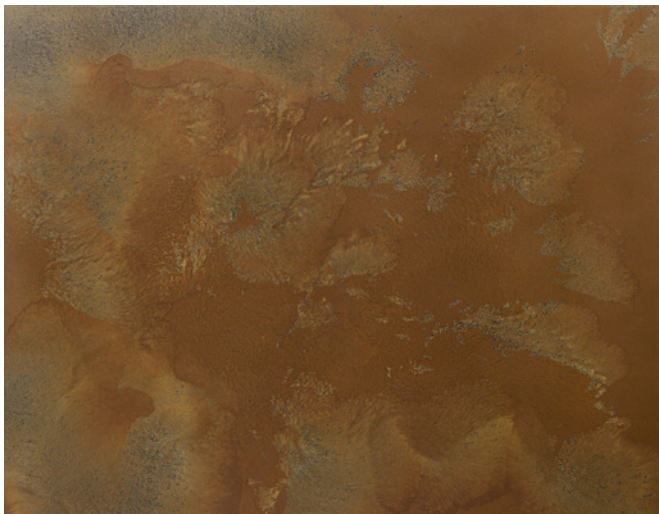
### URBAN MATTER\_CORTEN EFFECT

Coating cycle that makes it possible to create an aesthetic effect very similar to Corten steel on MDF or melamine board.

*Spray application*

### CHARACTERISTICS & ADVANTAGES

- Aesthetic effect similar to Corten steel.
- Creation of unique effects by adjusting the following variables: jet of compressed air, shade of the polyurethane matt base and of the aging agents.
- Excellent resistance to light.
- Warmth of wood and greater stability of the effect over time compared to Corten steel.



*Demonstrative video*

### TECHNICAL SPECIFICATION

#### COATING CYCLE

- **OP383N** Black polyurethane matt coating + 50% C266 + 20% D1010.
- 8-12 hours' drying time at 20°C e 60% di U.R.
- Sanding with "OSP" (code DNOSP3) system or using 280-grain abrasive.
- **INVA/N44049** Water-based aging agent (flower yellow) - 60 g/m<sup>2</sup>.
- **INVA/N43808** Water-based aging agent (oxide red) - 40 g/m<sup>2</sup> wet on wet.
- Jet of air using the specific distributor (code 001901), regulated at 4 atmosphere, to create the effect.
- 12 hours' drying time at 20°C and 60% di R.H.
- **OAC305G5** Transparent acrylic matt top coat + 10% C200 + 50% D1010 - 60-80 g/m<sup>2</sup>.